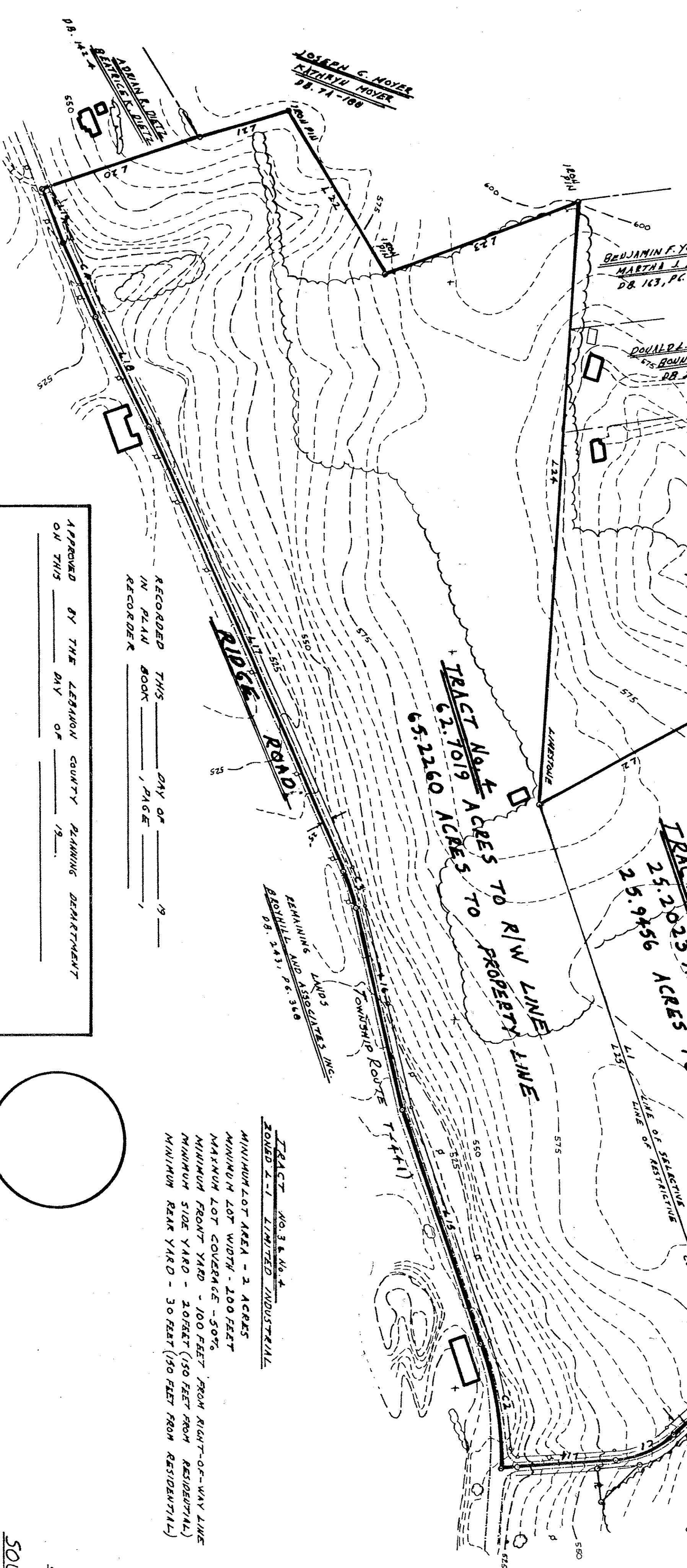
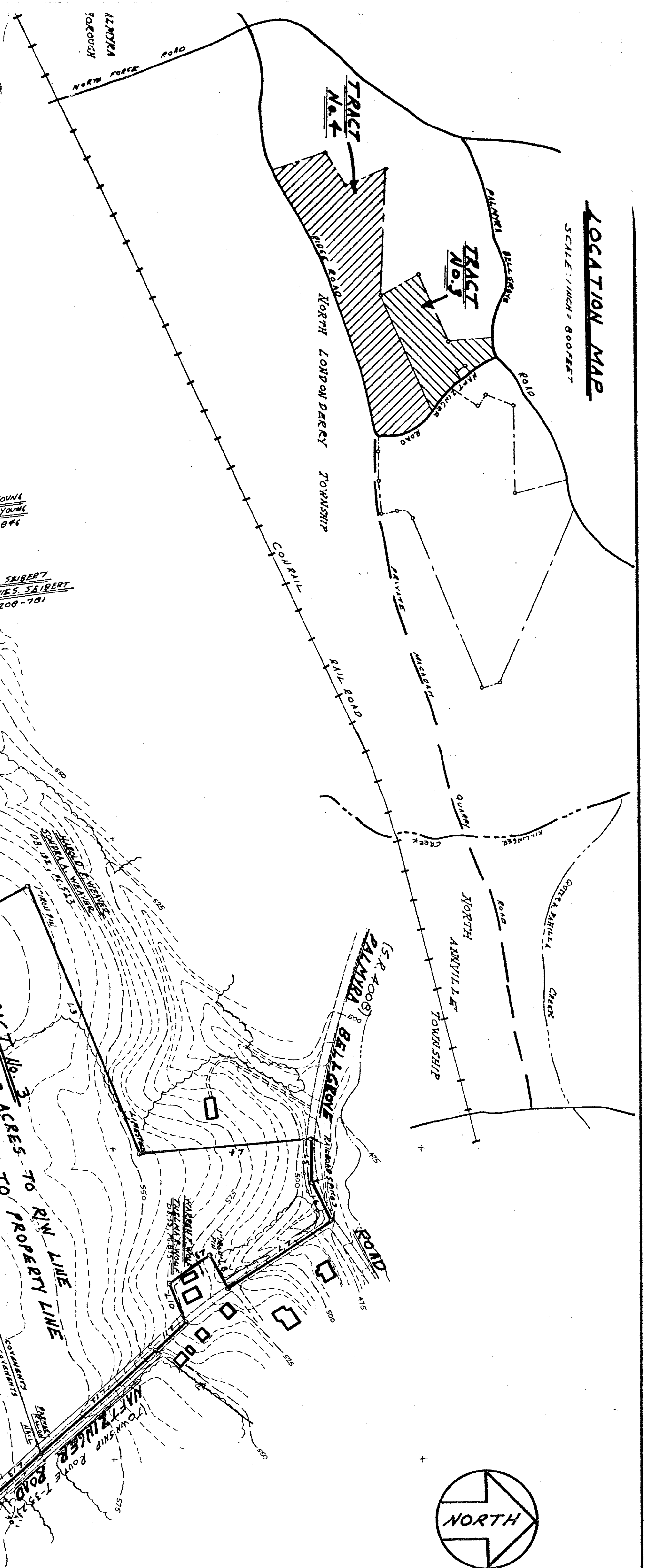


**LOCATION MAP**

SCALE: 1 INCH = 800 FEET

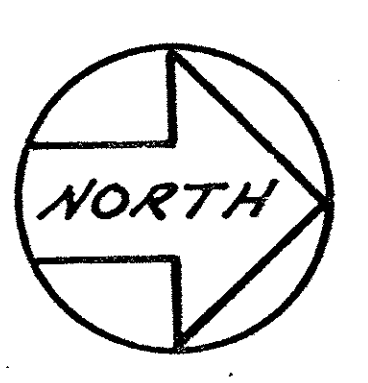


RECORDED THIS \_\_\_\_\_ DAY OF \_\_\_\_\_ 19\_\_\_\_  
 IN PLAN BOOK \_\_\_\_\_ PAGE \_\_\_\_\_

APPROVED BY THE LEBANON COUNTY PLANNING DEPARTMENT  
 ON THIS \_\_\_\_\_ DAY OF \_\_\_\_\_ 19\_\_\_\_

APPROVED BY THE SUPERVISORS OF NORTH LONDON DERRY TOWNSHIP  
 ON THIS \_\_\_\_\_ DAY OF \_\_\_\_\_ 19\_\_\_\_

APPROVED BY THE PLANNING COMMISSION OF NORTH LONDON DERRY TOWNSHIP  
 ON THIS \_\_\_\_\_ DAY OF \_\_\_\_\_ 19\_\_\_\_



**CURVE TABLE**

CURVE	LENGTH	ARC	CHORD	CHORD BEARING
C 1	179.57'	270.00'	99.25'	S 23° 53' 50" E
C 2	345.57'	1040.00'	343.99'	S 81° 04' 41" W
C 3	106.15'	600.00'	105.01'	S 71° 57' 17" W
C 4	217.12'	2055.00'	109.86'	S 68° 14' 13" W

**BEARING TABLE**

LINE	BEARING	DISTANCE
1/1	S 71° 15' 43" W	1432.18'
1/2	N 27° 02' 47" W	546.77'
1/3	N 67° 46' 29" E	931.29'
1/4	N 04° 40' 05" W	599.25'
1/5	N 09° 30' 02" E	140.12'
1/6	N 62° 46' 08" E	137.35'
1/7	S 33° 06' 16" E	393.49'
1/8	S 6° 43' 11" W	123.90'
1/9	S 35° 00' 28" E	160.49'
1/10	N 68° 35' 58" E	135.00'
1/11	S 41° 49' 45" E	135.95'
1/12	S 40° 57' 04" E	499.92'
1/13	S 09° 50' 37" E	222.19'
1/14	S 70° 01' 33" W	314.06'
1/15	S 70° 31' 32" W	670.63'
1/16	S 64° 51' 11" W	1309.96'
1/17	S 64° 01' 37" W	330.95'
1/18	S 68° 16' 36" W	197.13'
1/19	N 08° 17' 37" W	452.49'
1/20	N 59° 13' 48" E	515.15'
1/21	N 20° 08' 01" W	561.85'
1/22	S 05° 48' 19" E	1437.73'
1/23	N 71° 14' 43" E	1432.18'

**NOTE:**  
 TRACTS NO. 3 AND 4 ARE INTENDED FOR TITLE TRANSFER PURPOSES ONLY. NO CONSTRUCTION OR DEVELOPMENT OF THESE TRACTS MAY OCCUR PRIOR TO TOWNSHIP AND COUNTY APPROVAL OF APPLICABLE SUBDIVISION AND/OR LAND DEVELOPMENT PLANS. ILLUSTRATING SITE DEVELOPMENT AND NECESSARY UTILITIES. CONSTRUCTION, DEVELOPMENT, DEED TRANSFER AND USE OF TRACTS NO. 3 AND 4 ARE SUBJECT TO THE APPLICABLE COVENANTS REGARDING THE MAINTENANCE OF QUARRY OPERATIONS WITHIN THE WILSON QUARRY, AS SPECIFIED WITHIN COVENANT DECLARATION FILED WITH MISCELLANEOUS BOOK 125, PAGE 76-78 AND 824-829, LEBANON COUNTY RECORDS OF DEEDS OFFICE.

STATE OF PENNSYLVANIA  
 COUNTY OF LEBANON  
 ON THIS \_\_\_\_\_ DAY OF \_\_\_\_\_ 19\_\_\_\_  
 BEFORE ME, a Notary Public in and for said County and State, of BROOKHILL AND ASSOCIATES, INC. DID PERSONALLY APPEAR AND ACKNOWLEDGE THIS PLAN TO BE HIS ACT AND DEED AND WHO DESIRED THE SAME TO BE RECORDED AS SUCH NOTARY PUBLIC \_\_\_\_\_  
 MY COMMISSION EXPIRES \_\_\_\_\_

IT IS HEREBY CERTIFIED THAT THE UNRECORDED THIS LEGAL OR EQUITABLE TITLE TO THE LAND SHOWN ALL STREETS SHOWN HEREON ARE NOT HEREBY DEDICATED ARE "STREETS DEDICATED TO THE PUBLIC USE OF BROOKHILL AND ASSOCIATES, INC."

EASTERN LAND AND RESOURCES CORPORATION  
 P.O. BOX 31  
 LANCASTER, PA. 17603

RECORDED THIS \_\_\_\_\_ DAY OF \_\_\_\_\_ 19\_\_\_\_  
 IN PLAN BOOK \_\_\_\_\_ PAGE \_\_\_\_\_

APPROVED BY THE LEBANON COUNTY PLANNING DEPARTMENT  
 ON THIS \_\_\_\_\_ DAY OF \_\_\_\_\_ 19\_\_\_\_

APPROVED BY THE SUPERVISORS OF NORTH LONDON DERRY TOWNSHIP  
 ON THIS \_\_\_\_\_ DAY OF \_\_\_\_\_ 19\_\_\_\_

APPROVED BY THE PLANNING COMMISSION OF NORTH LONDON DERRY TOWNSHIP  
 ON THIS \_\_\_\_\_ DAY OF \_\_\_\_\_ 19\_\_\_\_

**FINAL SUBDIVISION PLAN**  
**OF LAND OF EASTERN LAND AND RESOURCES CORPORATION**  
 LAND SITUATED  
 SOUTH OF PALMYRA BELL GROVE ROAD (S.R. 400B),  
 WEST OF HAETZINGER ROAD (TOWNSHIP ROUTE T-352),  
 NORTH OF RIDGE ROAD (TOWNSHIP ROUTE T-441)  
 NORTH LONDON DERRY TOWNSHIP  
 LEBANON COUNTY, PENNSYLVANIA  
 22 DECEMBER 1989

PLAN PREPARED BY:  
**TRIMBLE SURVEYORS**  
 359 WEST WOODS DRIVE LITITZ, PA. 17543  
 (717) 626-0018

CERTIFICATION OF ACCURACY  
 I HEREBY CERTIFY THAT TO THE BEST OF MY KNOWLEDGE THE PLAN SHOWN AND DESCRIBED HEREIN IS TRUE AND CORRECT TO THE AGENCY REQUIRED BY THE LEBANON COUNTY SUBDIVISION AND LAND DEVELOPMENT ORDINANCES.  
 22 DECEMBER 1989  
**PHILIP TRIMBLE** P.E. #30 0771-E

SCALE: 1 INCH = 200 FEET