

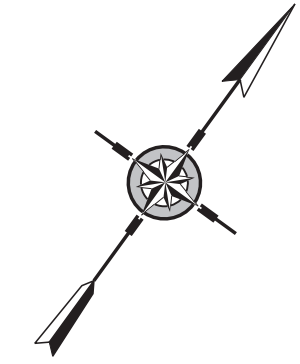
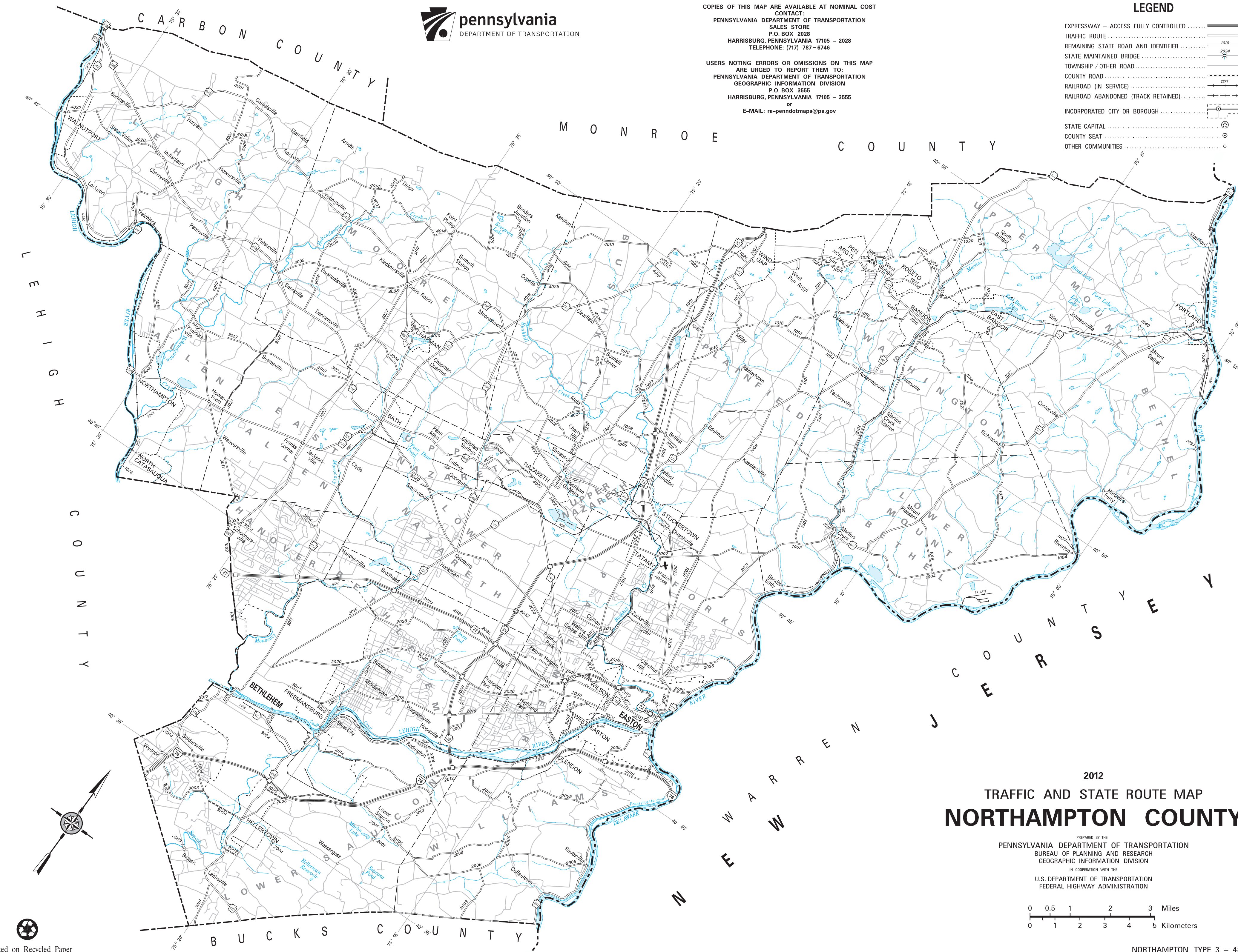


COPIES OF THIS MAP ARE AVAILABLE AT NOMINAL COST  
 CONTACT:  
 PENNSYLVANIA DEPARTMENT OF TRANSPORTATION  
 SALES STORE  
 P.O. BOX 2028  
 HARRISBURG, PENNSYLVANIA 17105 - 2028  
 TELEPHONE: (717) 787 - 6746

USERS NOTING ERRORS OR OMISSIONS ON THIS MAP  
 ARE URGED TO REPORT THEM TO:  
 PENNSYLVANIA DEPARTMENT OF TRANSPORTATION  
 GEOGRAPHIC INFORMATION DIVISION  
 P.O. BOX 3555  
 HARRISBURG, PENNSYLVANIA 17105 - 3555  
 or  
 E-MAIL: ra-pennodotmaps@pa.gov

**LEGEND**

- EXPRESSWAY - ACCESS FULLY CONTROLLED .....
- TRAFFIC ROUTE .....
- REMAINING STATE ROAD AND IDENTIFIER .....
- STATE MAINTAINED BRIDGE .....
- TOWNSHIP / OTHER ROAD .....
- COUNTY ROAD .....
- RAILROAD (IN SERVICE) .....
- RAILROAD ABANDONED (TRACK RETAINED) .....
- INCORPORATED CITY OR BOROUGH .....
- STATE CAPITAL .....
- COUNTY SEAT .....
- OTHER COMMUNITIES .....



2012  
 TRAFFIC AND STATE ROUTE MAP  
**NORTHAMPTON COUNTY**

PREPARED BY THE  
 PENNSYLVANIA DEPARTMENT OF TRANSPORTATION  
 BUREAU OF PLANNING AND RESEARCH  
 GEOGRAPHIC INFORMATION DIVISION  
 IN COOPERATION WITH THE  
 U.S. DEPARTMENT OF TRANSPORTATION  
 FEDERAL HIGHWAY ADMINISTRATION

